

# Yukon Mineral Exploration, Development and Mining Activity 2024

## MINING AND EXPLORATION PROJECTS

- silver
- gold
- copper
- nickel +/- PGE
- lead/zinc
- tungsten
- unknown

### Exploration projects - deposit type

- ⊕ iron oxide breccias/vein
- △ mafic/ultramafic associated
- mississippi valley type
- porphyry/sheeted vein
- ◇ sediment associated
- ◇ skarn/replacement
- ◇ vein/breccia
- ▽ volcanic associated
- ☆ unknown

### Mining projects - development phase

- ⊙ planning, design and assessment
- ⊙ assessment complete; may proceed to approvals
- ⊙ fully permitted; may proceed to construction
- ⊙ operation and production
- ⊙ temporary closure

### Drilling program

- indicates drilling program

### Expenditures

projects with >\$500,000 in expenditures are large symbols  
projects with <\$500,000 in expenditures are small symbols

## MAP FEATURES

- community
- ★ capital city
- ⚓ deep water port

### Transportation routes

- primary highway
- secondary highway

### Parks and protected areas

- national/territorial park
- interim staking prohibition

### Generating stations

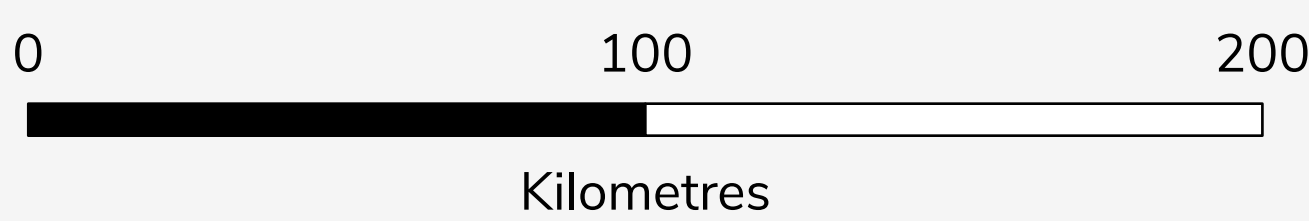
- ⚡ diesel
- ⚡ hydroelectric
- ⚡ liquefied natural gas

### Transmission line

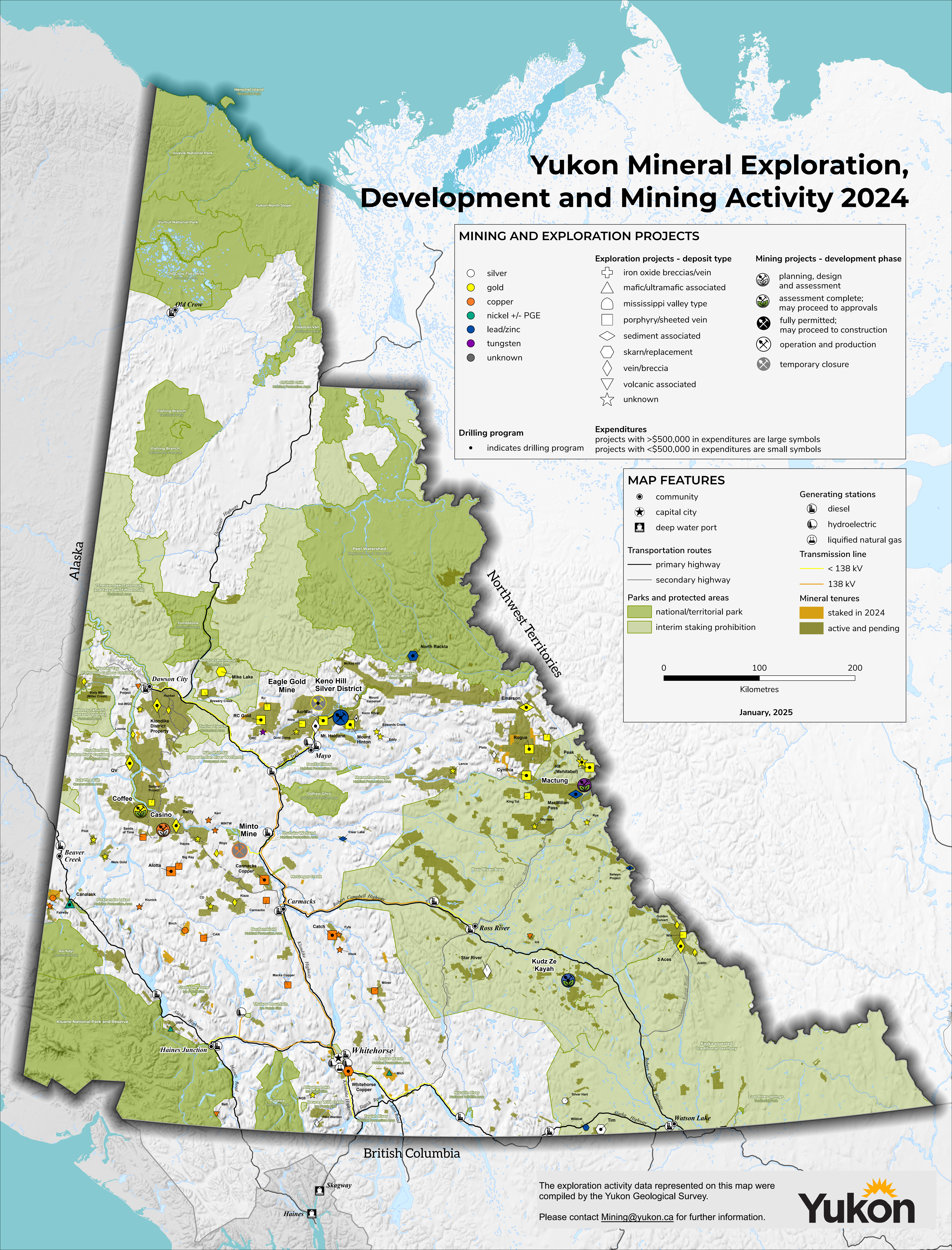
- < 138 kV
- 138 kV

### Mineral tenures

- staked in 2024
- active and pending



January, 2025



The exploration activity data represented on this map were compiled by the Yukon Geological Survey.

Please contact [Mining@yukon.ca](mailto:Mining@yukon.ca) for further information.

